

# Best Practices

## WideTEK<sup>®</sup> 12

## WideTEK<sup>®</sup> 25



## 1. Revision History

Date	Rev.	Name	Description of Change	Reason of Change
27.08.2020	1.0	MGR, JCA	First draft	First published version

## 2. WideTEK® 12 / WideTEK® 25 – Not a “normal” scanner.

The Image Access WideTEK® 12 and WideTEK® 25 scanners are not ordinary flatbed scanners!

These WideTEK Scanners have unusual properties that create completely new applications:

### 2.1 Integrated 64-bit Linux PC

The WideTEK® 12 and WideTEK® 25 scanners have a very fast 64-bit Linux PC and a fast GBit Ethernet with TCP/IP based Scan2Net® Interface built in, which enables many different functions:

- You can operate the scanner either with a standard web browser, the built-in touchscreen or a mobile device like an iPad or Android tablet, or an optional 21” touchscreen monitor.
- You can scan directly to SMB, USB, FTP, network printer, hot folder, mobile device in many different output formats, like PDF, PDF/A, TIFF, JPEG, PNM, DICOM etc.
- No driver needed
- No additional computer needed! Full functionality out of the box.
- You can connect any HDMI touchscreen monitor directly to the scanner, for preview and operation.

### 2.2 Fastest scanner

These are the fastest A3 size (WT12), A2 size (WT25) scanners on the market. Get a full scan in less than 3 seconds.

### 2.3 CAPTURES 3D SURFACES

This is not a CIS scanner, but a scanner with a high-end CCD camera in combination with a dual LED illumination and new diffusors which enables **capturing 3D SURFACES**, TEXTURES OF VARIOUS MATERIALS and BRAILLE PRINT.

This superior technology enables the scanning of various documents in incredible quality with up to 1200dpi.

## 2.4 Very easy to use:

The integrated ScanWizard user interface enables simple and intuitive operation of the scanner without prior knowledge. With the ScanWizard you can easily integrate the scanner into your existing workflow.

## 2.5 Large document size

19% more than DIN/ISO A3 (WT12), 19% more than DIN/ISO A2 (WT25)

## 2.6 Backlight option

Optional backlight unit available to scan x-rays, transparencies, films, photos

## 2.7 Quality standards

FADGI, METAMORFOZE, ISO 19264-1 COMPLIANT

# 3. Basic settings to scan 3D objects

Very important: If you want to scan with the 3D Light, you must switch from Default Light to 3D Light **before** you start the scan!

You can make many image change and enhancement settings **after** the scan, but if you want to do a 3D scan, you must switch to 3D light in the settings beforehand!

Of course, you can summarize all the settings you need for a 3D scan in a template, so that when you start the scanner, you can select the template you have created and therefore do not have to make any further settings. This we will show you in another chapter.

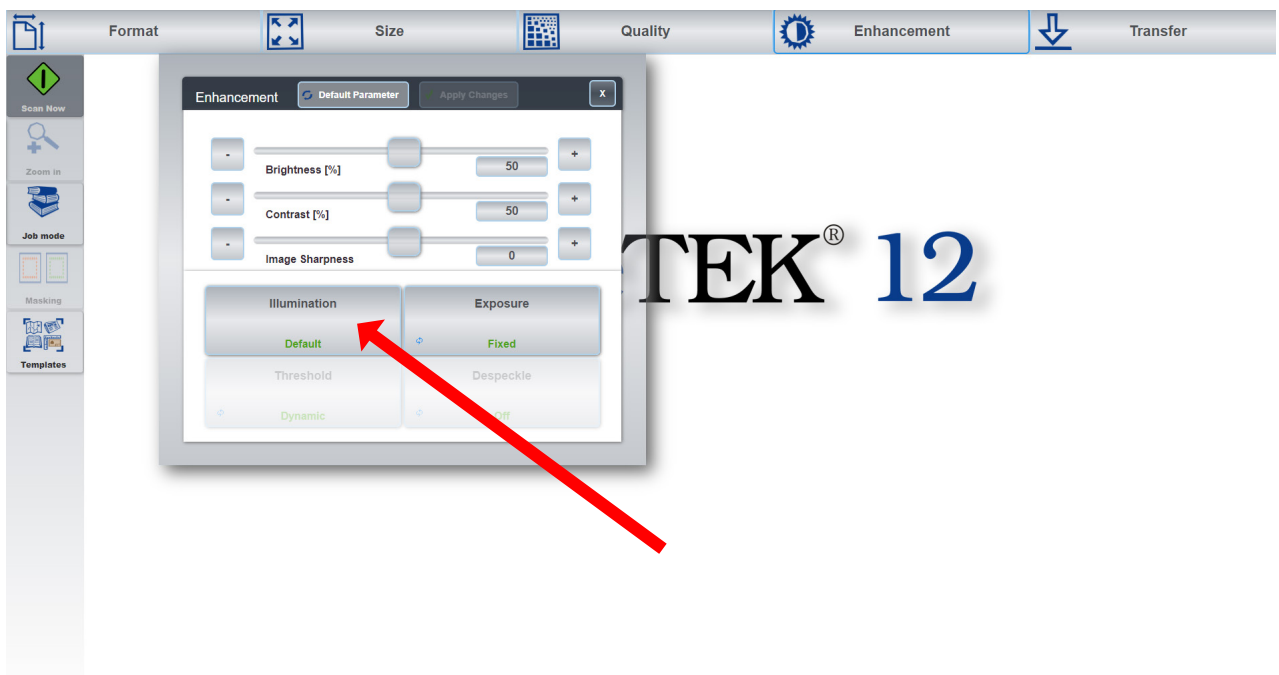
Here we go:

If you start the scanner you will see the menu interface of the ScanWizard.

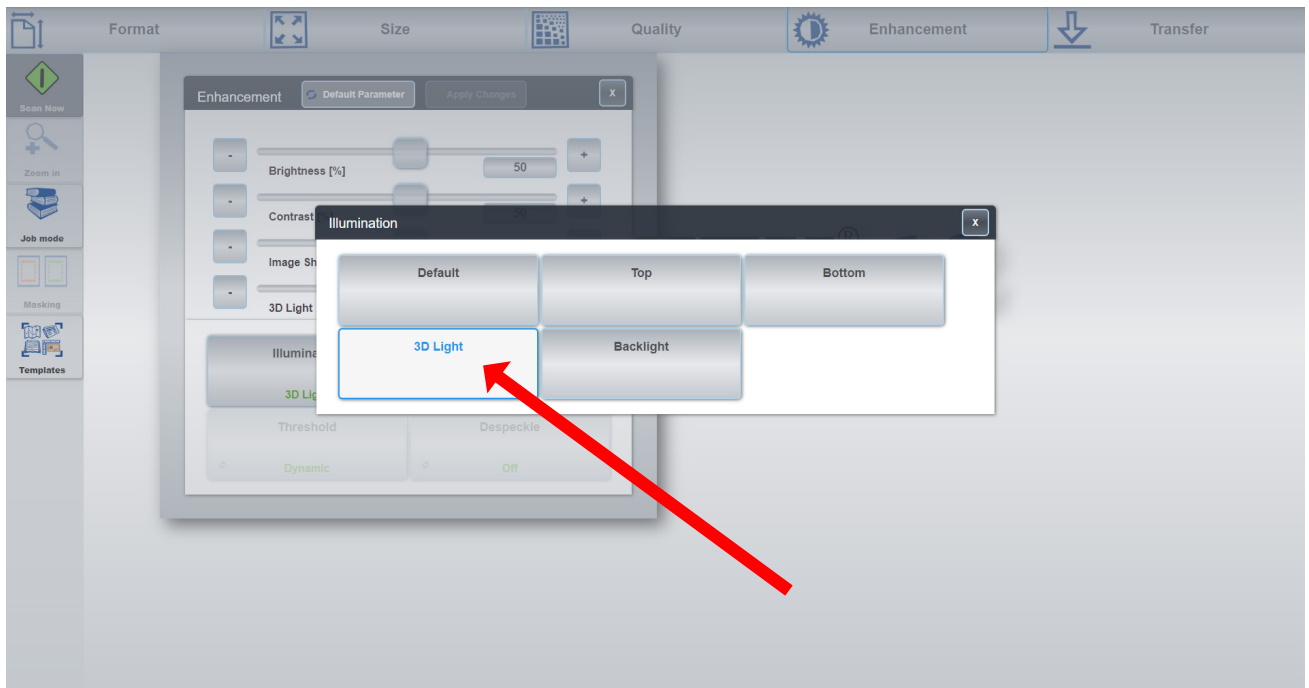
To switch to the 3D Light modus, click on **Enhancement**



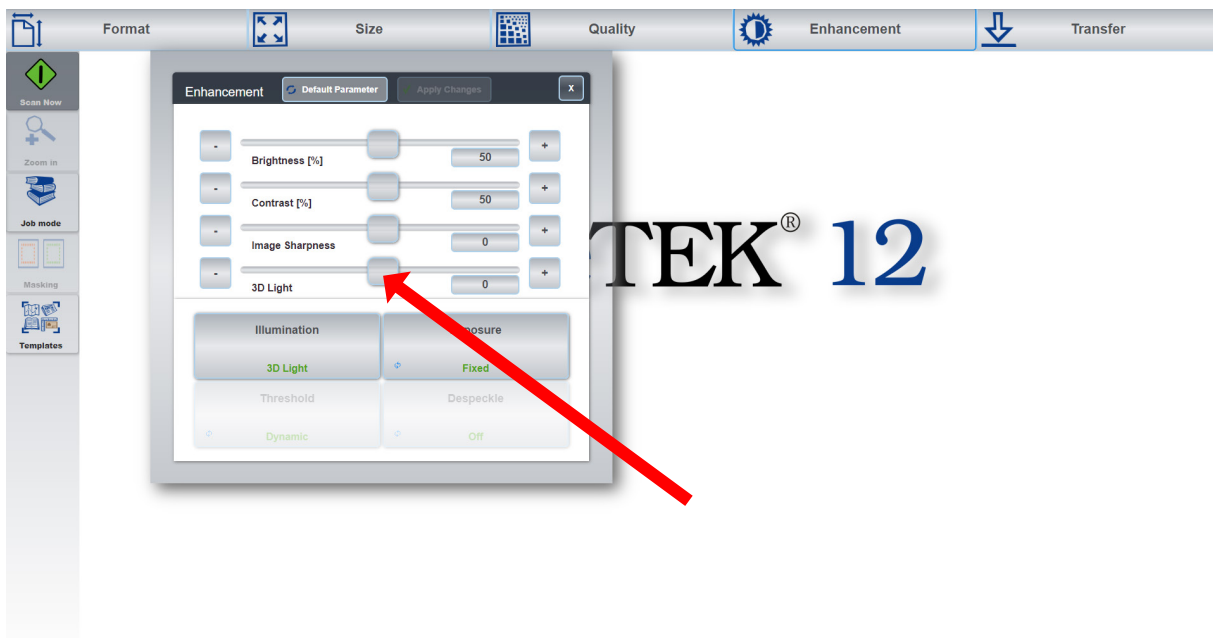
Now you can see the button **Illumination**



Switch from **Default** to **3D Light**



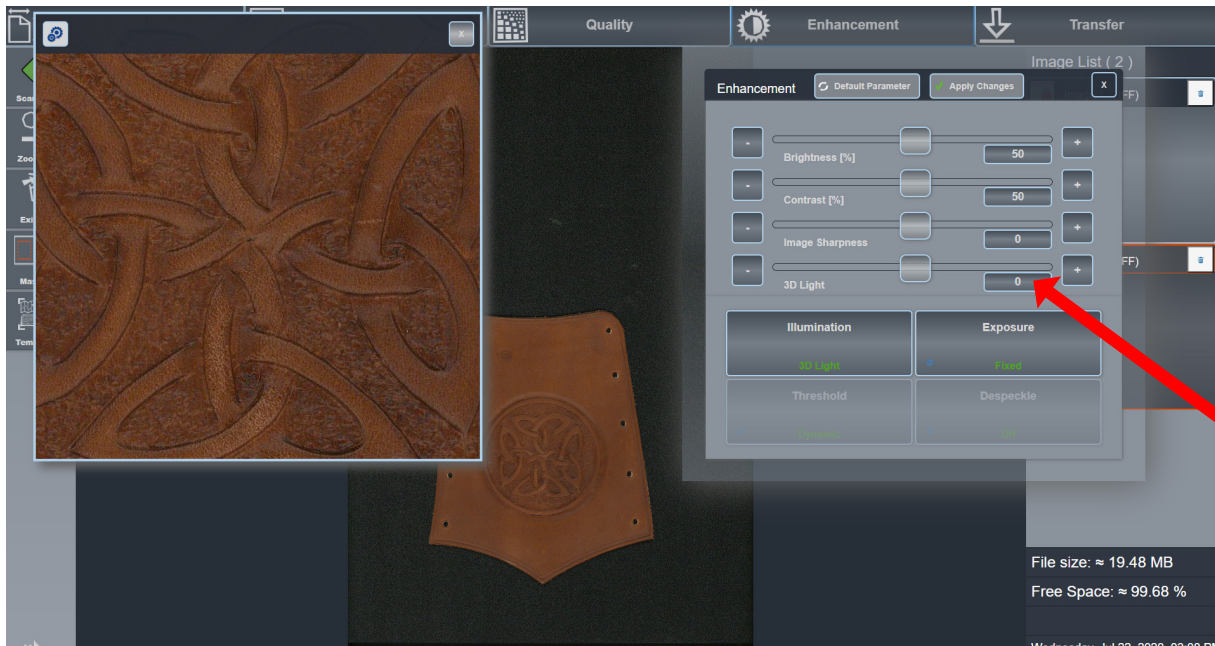
Now you can see the 3D Light slider. **This slider is very important to regulate the intensity of the 3D lighting after the scan.**



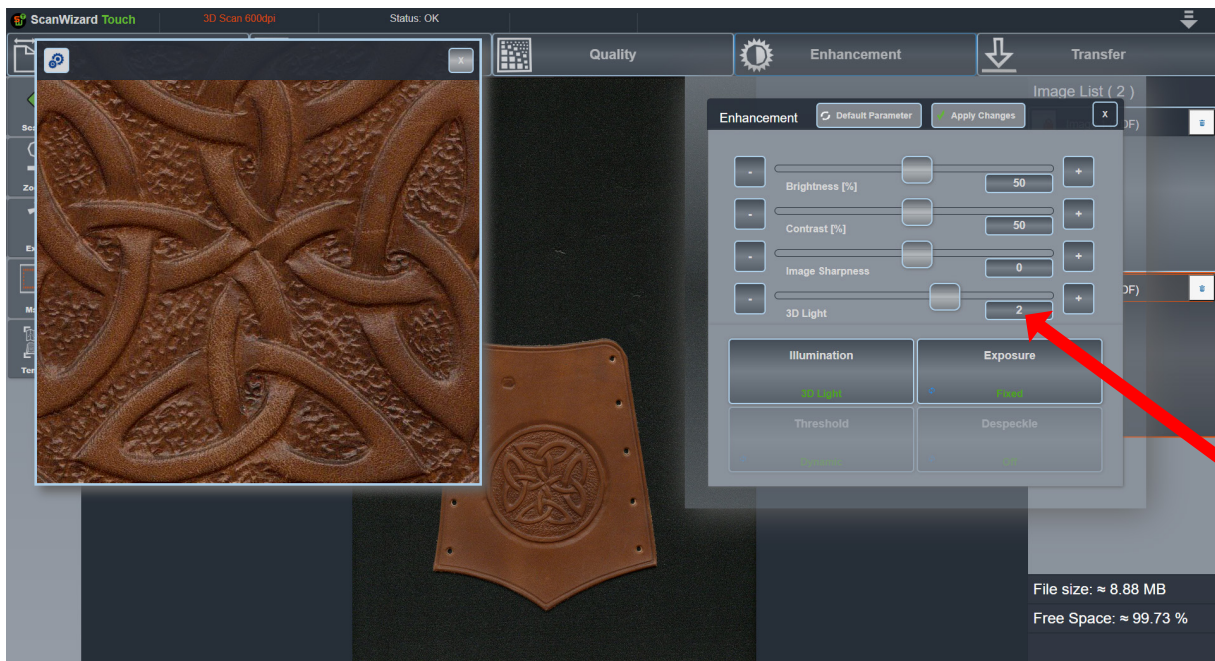
If the 3D Light slider is in the middle (0), you will see no 3D effect! If you slide to the right, you can choose the intensity of the 3D effect step by step, so that you can adjust the 3D impression according to your scanned object.

Here you can see an example which shows the different 3D intensities:

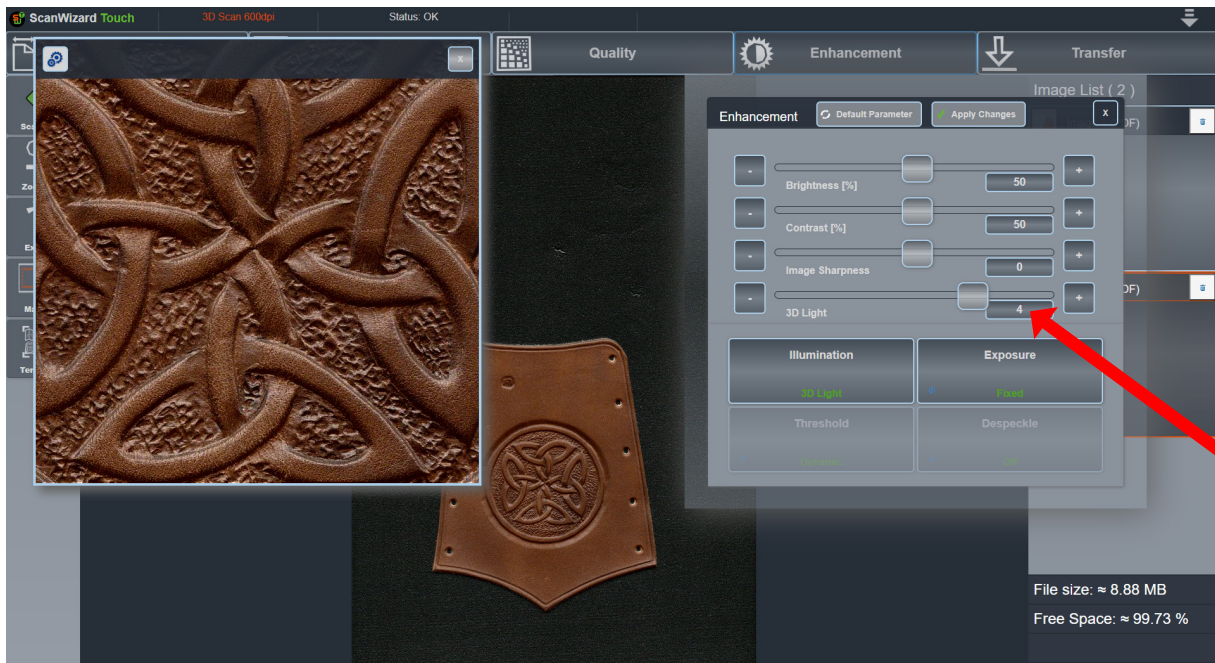
On this picture from a leather artwork, you can see a scan with a neutral setting, that means, the slider is in the middle with the value 0 (zero).



In the next picture you can already see a slight 3D effect. The slider has been moved two steps to the right.

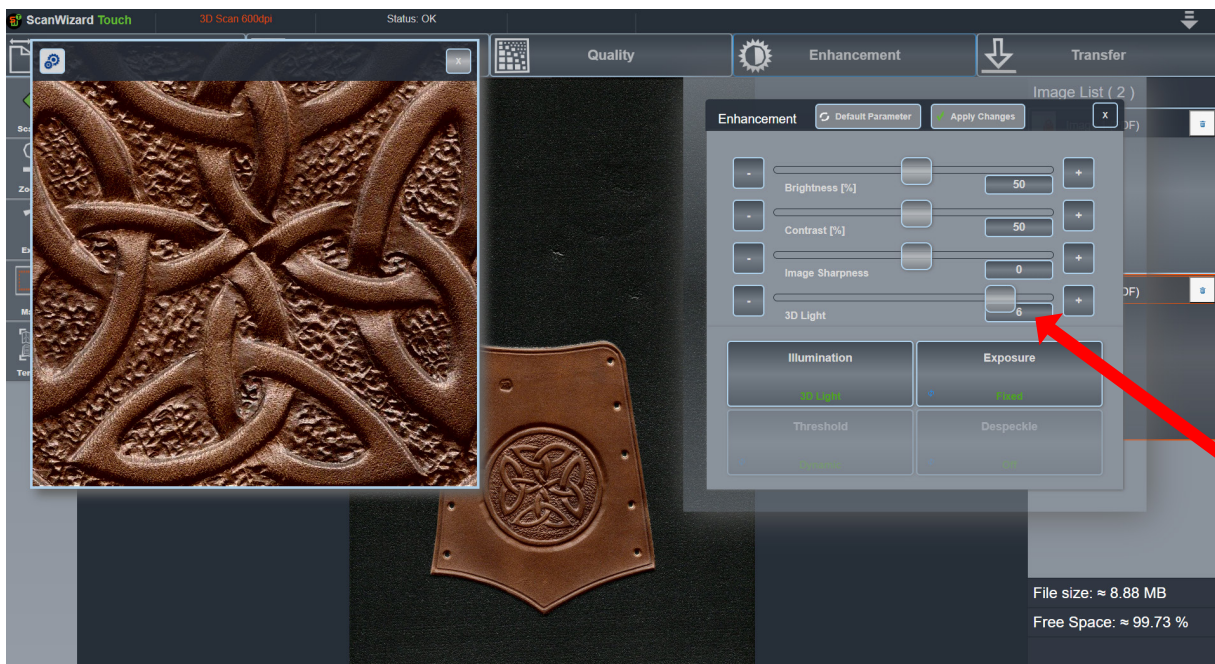


And in this picture, you can see the 3D effect with the value 4:



The strength of the effect depends on the scanned object.

Here you can see the effect with the value 6.

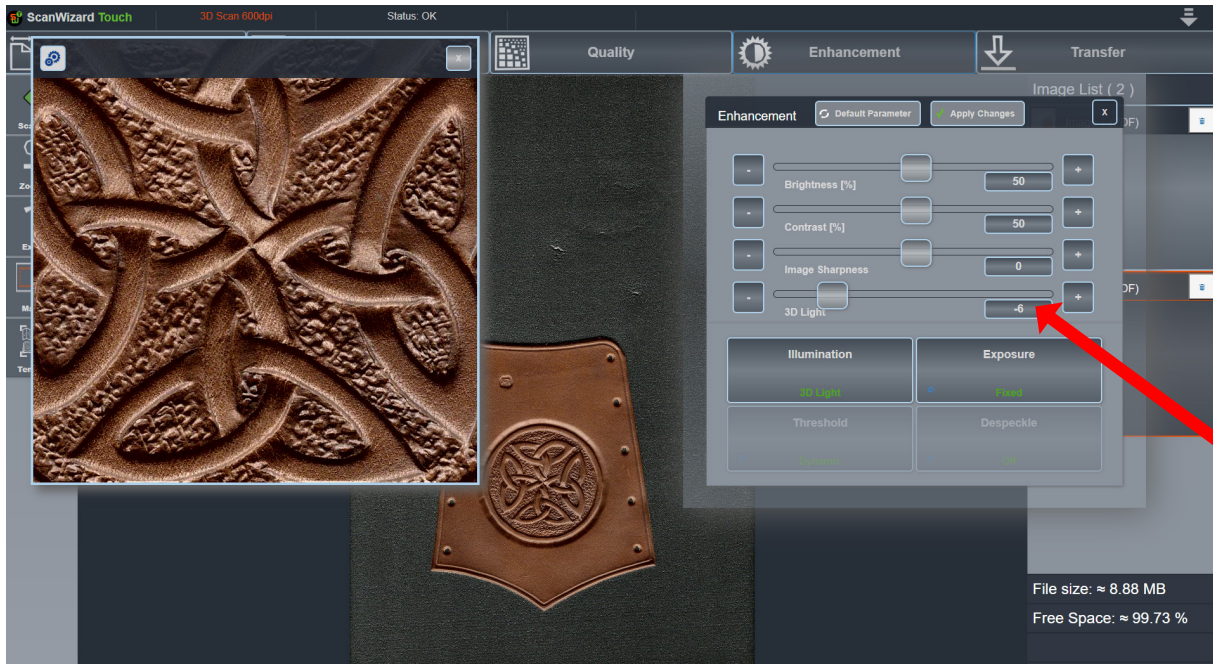


As you can see, with the 3D Illumination you can achieve a dramatic effect.

## Special feature: Inverting the 3D structures.

A special feature is the possibility to invert the 3D effect. This reverses the protruding structures. This opens new possibilities in the analysis of the structures, e.g. when restoring paintings, reliefs, or engravings.

Here you can see the scan with the value minus 6:



## 4. Creating a template

To collect different settings in a template is very easy. You can either create a template directly in the ScanWizard user interface on the 21" touchscreen, or in a browser.

The easiest way is to create a template directly in the ScanWizard interface.



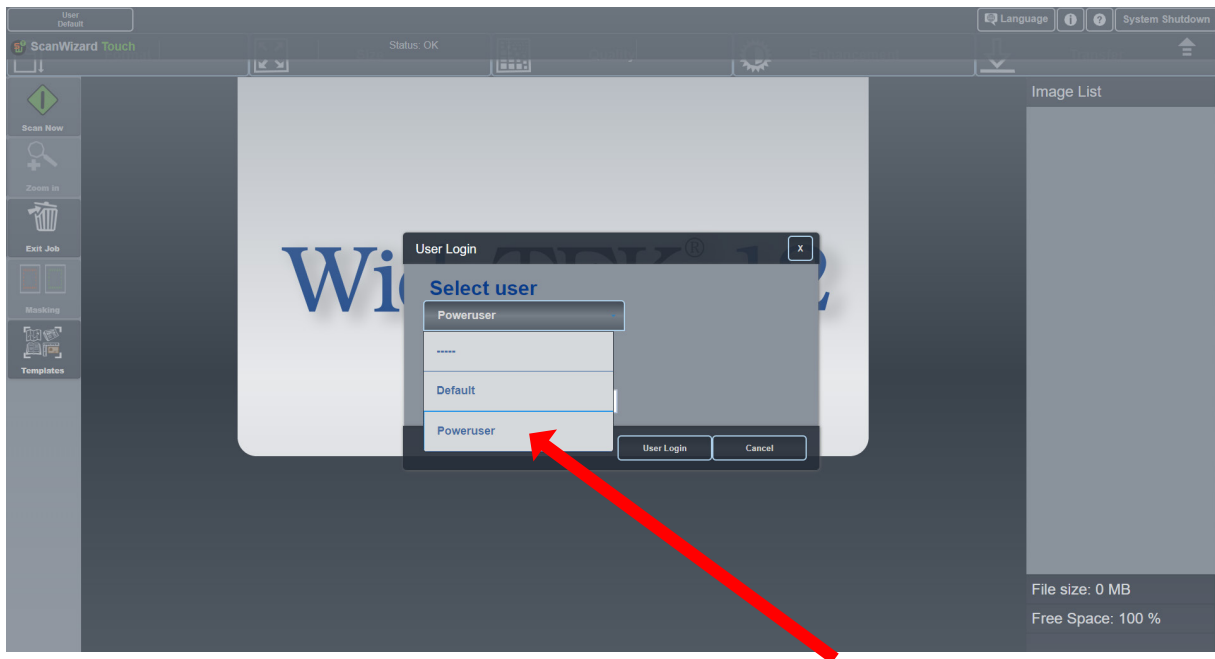
To be able to create your own templates, you have first to change from default user to “Poweruser”. To do this, click on the arrow symbol in the top right:



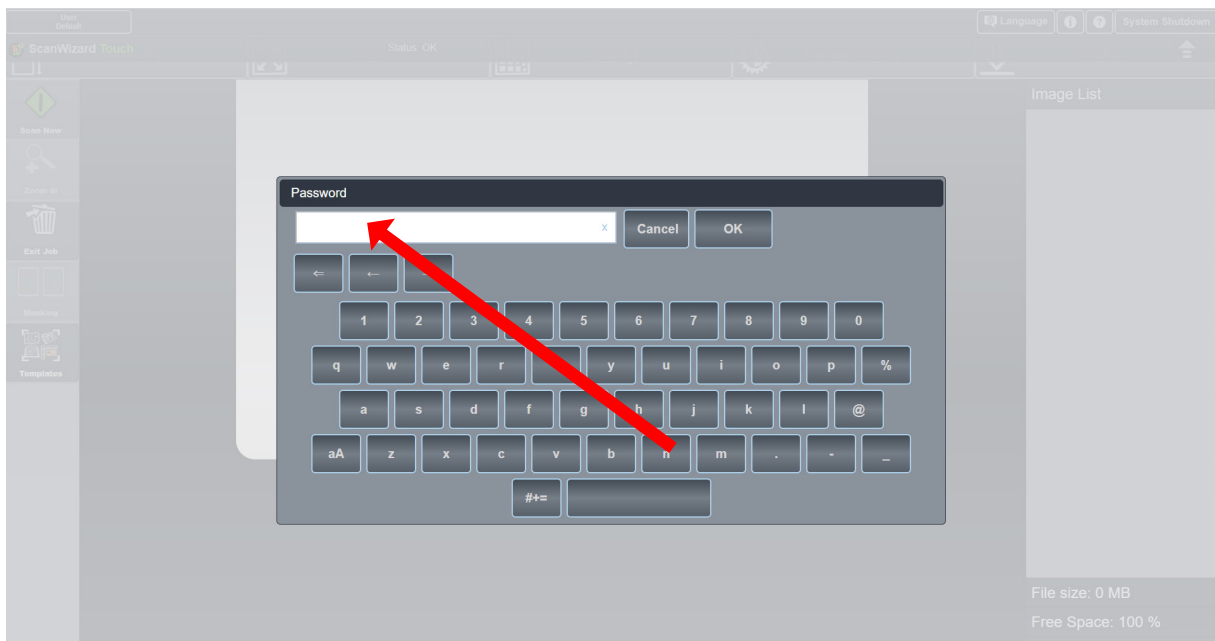
Click now on “user default”:



### Select Poweruser



Enter the Poweruser password, which is normally Poweruser as well:



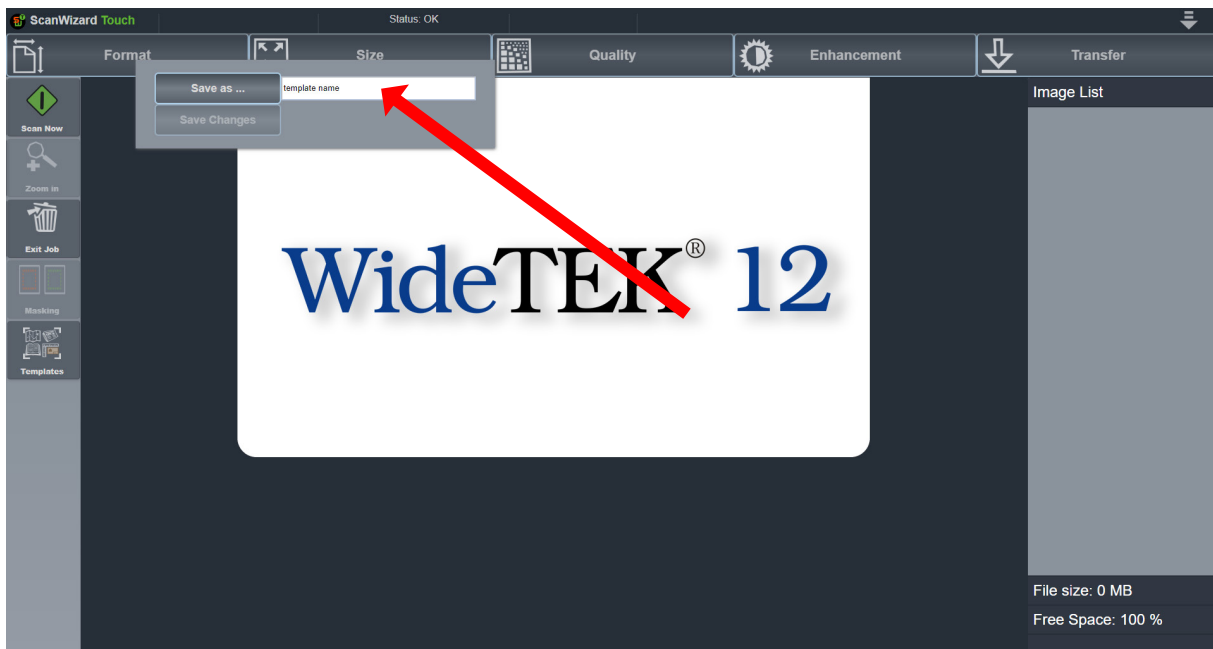
Now you can see that you're logged in as Poweruser and you can see a new button "Save Template":



Because you're now able to create new templates, let us do this now.

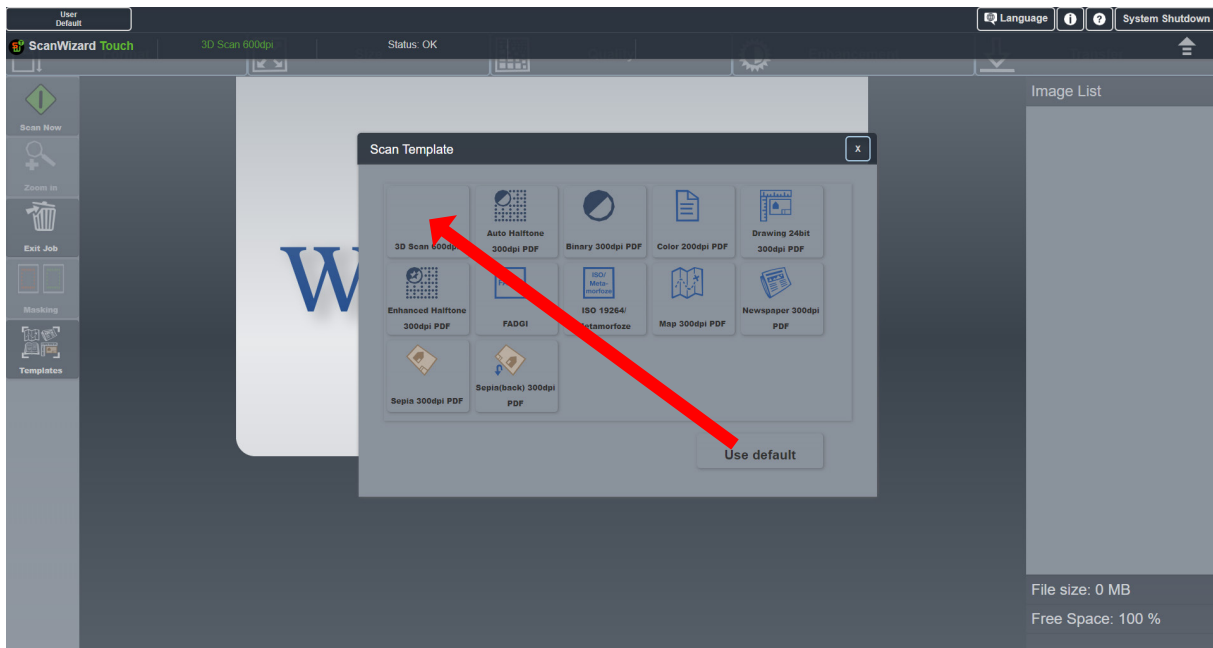
If you have made all the settings you need (see chapter 2), you can click on "Save Template".

You will then see the field to enter your own Template name:



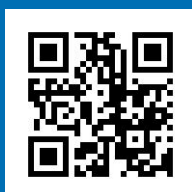
Now it's done!

If you click on the Template button, you can see your own new template.



You can create an unlimited number of templates so that you can design your own template for each task within your workflow.

*We hope that these instructions will make it easier for you to use your WideTEK scanner. If you have any questions, suggestions or ideas, please feel free to contact us at [marketing@imageaccess.de](mailto:marketing@imageaccess.de). We look forward to hearing from you!*



Visit our homepage!



IMAGE ACCESS GMBH

Hatzfelder Str. 161-163  
42281 Wuppertal, Germany  
Phone: +49 202 27058-0

[www.imageaccess.de](http://www.imageaccess.de)

IMAGE ACCESS LP

2511 Technology Drive, Suite 109  
Elgin, IL 60124, USA  
Phone: +1 (224) 293-2585

[www.imageaccess.us](http://www.imageaccess.us)