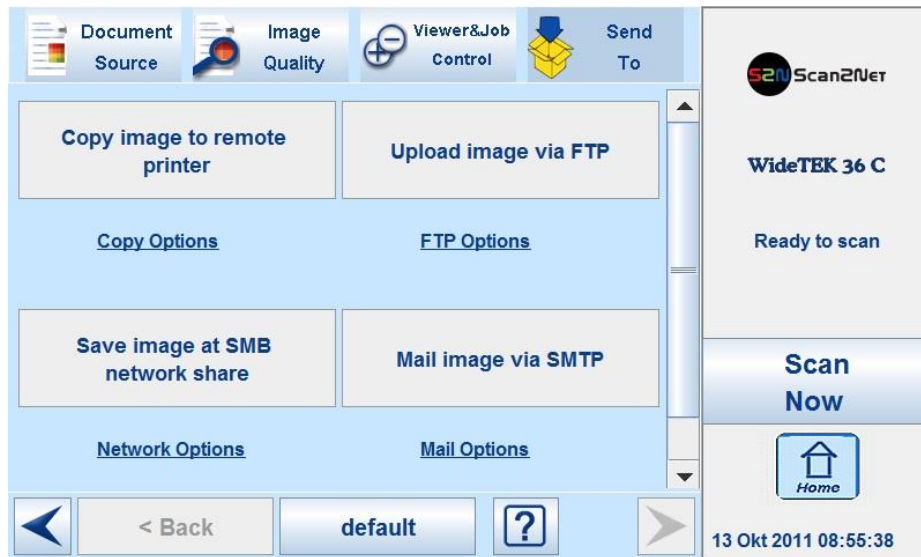


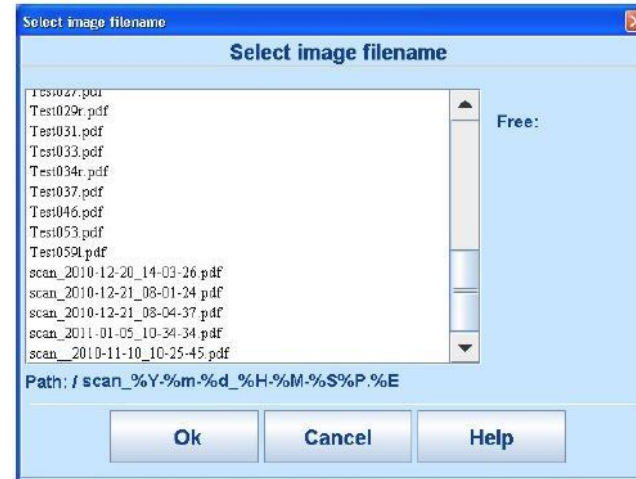
The WideTEK 36C was developed with self-service and kiosk type applications in mind.

Two USB connectors at the front of the device make it easy to walk up to the scanner, plug in a USB storage device, scan your source document and walk away -- without the need for a connected PC, key to any self-service environment.



Scanner users simply press a button to save their images to a connected USB device and scan. Once they have scanned their documents, they can check the files stored on their

USB device by selecting the link USB Options. This displays a list of files contained on their device, letting users check to ensure that all files are stored.



- ✓ Two robust, industrial quality USB 2.0 ports
- ✓ Immediate availability of scans on a take-away device, virtually paper-free
- ✓ True stand alone solution